

# AMERICAN HOMESTEAD COLLECTION



2019

**Clayton**  
middlebury

# AMERICAN HOMESTEAD COLLECTION

## STANDARD FEATURES

### INTERIOR

SHAW CARPET W/5# REBOND PAD & TACK STRIP  
8 FT FLAT CEILINGS THROUGHOUT  
TAPED CEILING JOINTS  
1/2" DRYWALL THROUGHOUT  
BUILDER GRADE PRIMER THROUGHOUT  
CEILING BEAMS IN KITCHEN & DINING ROOM  
2-BULB CEILING LIGHTS IN SECONDARY BEDROOMS  
FARM STYLE CEILING FANS IN LIVING & MASTER BEDROOM  
UPGRADED TRIM T/O WITH 3" BASE & 2" CASING  
5-PANEL WHITE INTERIOR DOORS  
32" INTERIOR DOORS WHERE APPLICABLE

### KITCHEN

42" ALABASTER WHITE KITCHEN OVERHEAD CABINETS  
CONCEALED EUROPEAN STYLE COUNTER-SUNK HINGES  
3/4" ADJUSTABLE SHELVES IN OVERHEAD CABINETS  
FIXED CENTER SHELF IN BASE  
UPGRADE BLACK CABINET DOOR HARDWARE  
WHITE APRON SINK  
FRIGIDAIRE APPLIANCES  
WHITE 30" DELUXE SELF-CLEANING RANGE  
WHITE 18" CF FROST FREE REFRIGERATOR  
BLACK DISHWASHER  
(4) RECESSED LED CAN LIGHTS IN KITCHEN  
RECESSED LED CAN LIGHT OVER KITCHEN SINK - VBP  
SCHOOLHOUSE PENDANTS OVER KITCHEN ISLAND  
FULL HEIGHT CERAMIC BACKSPLASH  
DRAWER OVER DOOR BASE CABINET CONSTRUCTION

### BATHS

60" WALK-IN BELLACORE SHOWER  
60" FIBERGLASS TUB/SHOWER - BATH 2  
HIGH PRESSURE LAMINATED COUNTERTOPS  
& 4" BACKSPLASH  
ELONGATED PORCELAIN COMMODOES  
PORCELAIN LAVS  
LIGHTED POWER EXHAUST FANS IN ALL BATHS  
SCHOOLHOUSE LIGHTS ABOVE VANITIES  
BLACK METAL FAUCETS W/ANTI-SCALD  
SHIPLAP MIRRORS

### INSULATION

ZONE III INSULATION PACKAGE  
- R-28 BLOWN CEILING INSULATION W/VAPOR BARRIER  
- R-19 FIBERGLASS INSULATION IN WALLS  
- R-11 FIBERGLASS INSULATION IN FLOORS  
- METAL HEAT DUCTS

### EXTERIOR

NOMINAL 3/12 ROOF PITCH  
25 YEAR CERTAINTeed XT FIBERGLASS SHINGLES  
36" JELD-WEN FRONT & REAR DOOR W/DEADBOLT  
EXTERIOR LIGHT AT FRONT & REAR DOORS  
4 1/2" .40 MIL DUTCH LAP VINYL SIDING  
EXTERIOR GFI RECEPT  
BRONZE ARGON LOW E VINYL WINDOWS  
W/6 OVER CLEAR GRIDS  
15" SHUTTERS (FDS)

### UTILITIES

200 AMP SERVICE PANEL 20/40 BOX  
ELECTRIC FURNACE  
ECOBEE4 WIFI THERMOSTAT  
30 GALLON ELECTRIC WATER HEATER  
WATER HEATER PAN W/EXTERIOR DRAIN  
WIRE & PLUMB FOR WASHER  
WIRE & VENT FOR DRYER  
RECESSED WHOLE HOUSE SHUT OFF  
WATER SHUT-OFF VALVES THROUGHOUT  
GFI PROTECTED RECEPTACLES IN KITCHEN AND BATHS  
WIRELESS DOORBELL

### CONSTRUCTION

STEEL I-BEAM FRAME W/DETACHABLE HITCH  
2" X 6" FLOOR JOISTS - 16" O.C. ON 28 WIDES  
2" X 8" FLOOR JOISTS - 16" O.C. ON 30 WIDES  
23/32 T&G OSB FLOOR DECKING GLUED & FASTENED  
2" X 6" EXTERIOR WALLS - 16" O.C.  
20 LB ROOF LOAD  
7/16" OSB ROOF SHEATHING  
RIDGE VENT ROOF VENTING  
LINKED SMOKE DETECTORS W/BATTERY BACK-UP  
IN MAIN LIVING & ALL BEDROOMS  
7/16" OSB EXTERIOR SHEATHING W/WINDWRAP

### MODULAR SPECIFICATIONS ADDITIONS

NOMINAL 3/12 ROOF TRUSS  
2" X 10" FLOOR JOISTS 16" O.C.  
R-40 INSULATION IN CEILING  
ADDITIONAL EXTERIOR RECEPT (2 TOTAL)  
30 LB GROUND SNOW LOAD  
FIBERGLASS HEAT DUCTS  
2" X 4" INTERIOR WALLS  
2" X 4" MATE LINE WALL  
40/40 200 AMP PANEL BOX  
METAL CROSS BRIDGING

# AMERICAN HOMESTEAD COLLECTION

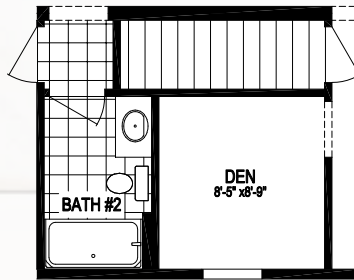
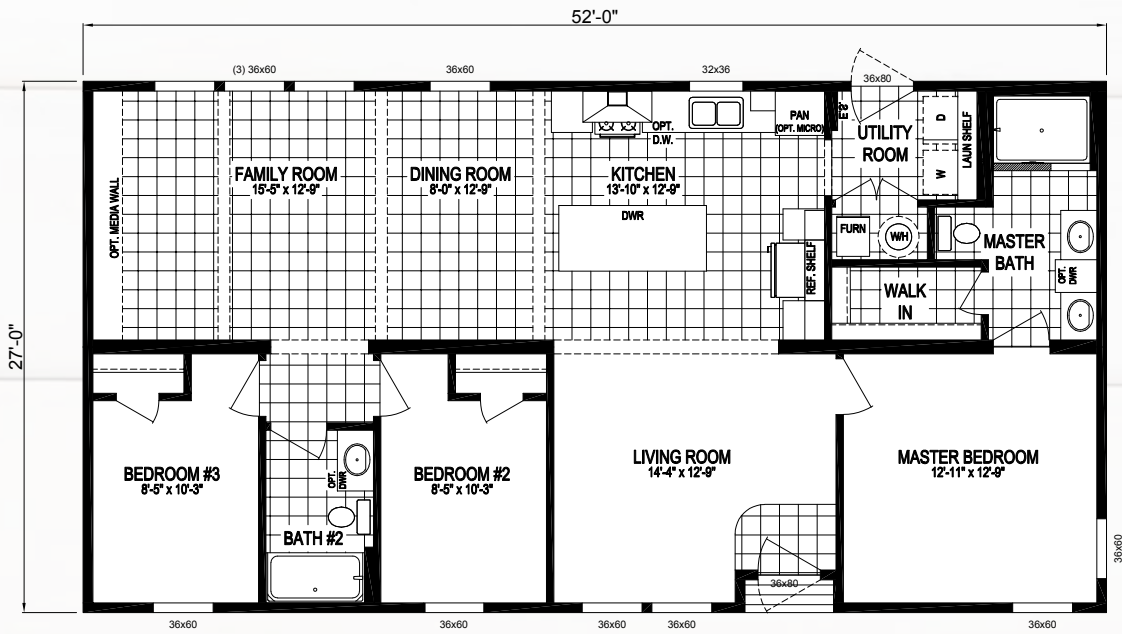
## INDEX

MODEL	SIZE	SQ. FEET	BEDROOMS	BATHS	PAGE
5228-1000	. . . . 52 X 28	. . . . 1404	. . . . . 3	. . . . . 2	. . . . . 4
5628-1002	. . . . 56 X 28	. . . . 1512	. . . . . 3	. . . . . 2	. . . . . 5
6028-1001	. . . . 60 X 28	. . . . 1620	. . . . . 3	. . . . . 2	. . . . . 6
6030-1001-1	. . . . 60 X 30	. . . . 1800	. . . . . 3	. . . . . 2	. . . . . 7

MODEL NUMBER:

# 5228-1000

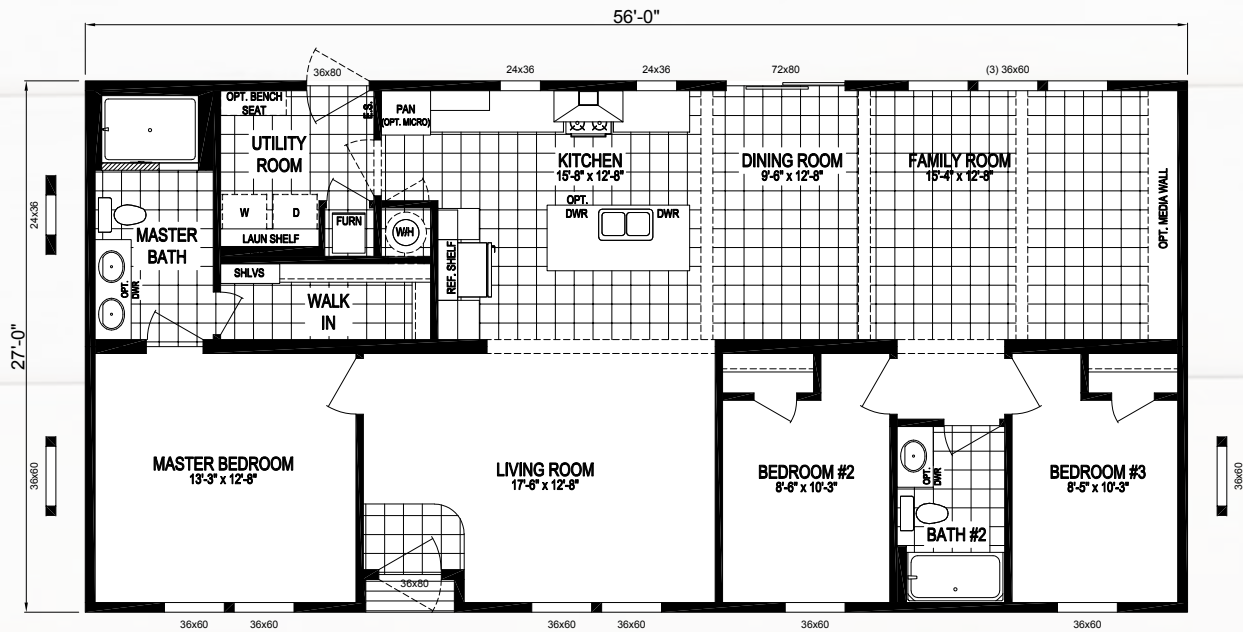
52 x 28 | 1404 Sq. Ft. 3 Bed | 2 Bath



OPTIONAL BASEMENT STAIRWELL  
(ONLY AVAILABLE AS A 2 BEDROOM)

MODEL NUMBER:  
**5628-1002**

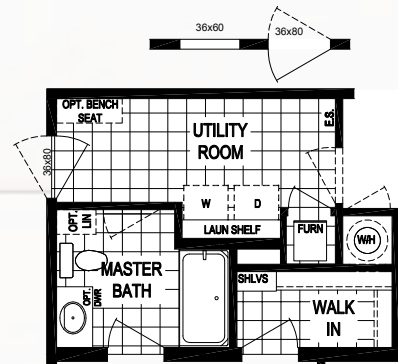
56 x 28 | 1512 Sq. Ft. 3 Bed | 2 Bath



**NOTE:**  
 HUD HOMES THAT HAVE A GAS WATER HEATER AND A 5/12  
 ROOF PITCH WILL REQUIRE AN "SC" ON SITE INSPECTION



OPTIONAL BASEMENT STAIRWELL

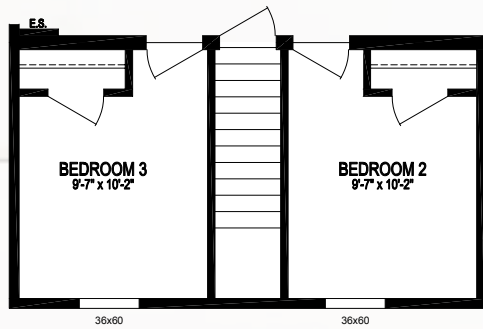
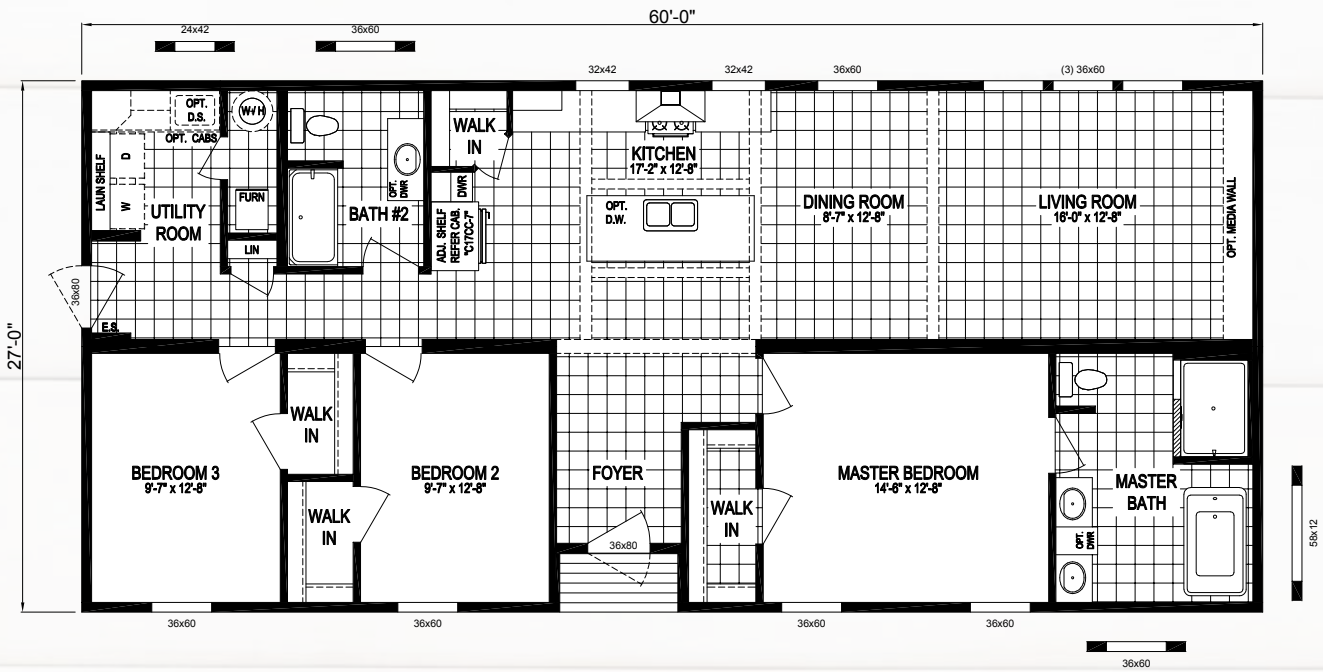


OPTIONAL END ENTRY  
 (BELLACORE SHOWER NOT AVAILABLE)

MODEL NUMBER:

# 6028-1001

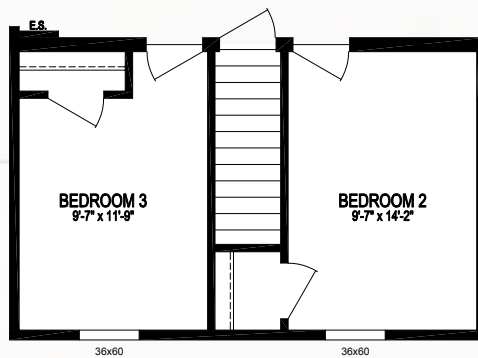
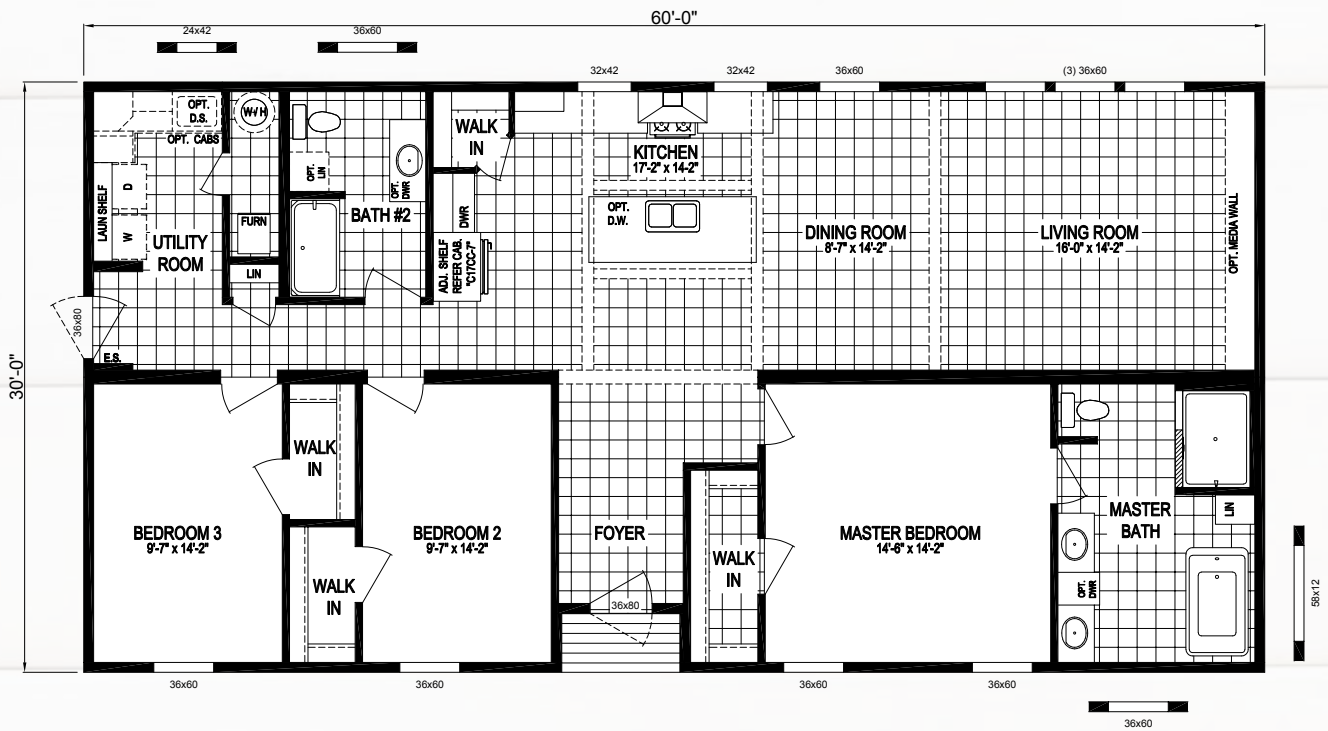
60 x 28 | 1620 Sq. Ft. 3 Bed | 2 Bath



OPTIONAL BASEMENT STAIRWELL

MODEL NUMBER:  
**6030-1001-1**

60 x 30 | 1800 Sq. Ft. 3 Bed | 2 Bath



OPTIONAL BASEMENT STAIRWELL

# AMERICAN HOMESTEAD COLLECTION

2019



Your Local Home Builder

437 N. Main Street  
Middlebury, IN 46540  
574.825.7500  
574.825.7569 fax

[www.claytonmiddlebury.com](http://www.claytonmiddlebury.com)

Because our company has a continuous product update process, specifications, floor plan lay-out and dimensions shown on this literature are subject to change without notice or obligations. Construction and design specifications as well as features presented conceptual, therefore should not be used as actual construction data and may not be offered in all series or models. Our Retailer will provide accurate, up-to-date information on available options and specifications for your home. 1/19

  
**Clayton**  
middlebury